

## Silent Check Valves (Non-Slam)

Silent Check Valves are used as protection against reverse flow where noise pollution or water hammering is a critical issue. These valves can provide not only quiet performance but also lower head loss.



### Design Features:

- ✦ High strength ductile iron body used for lowering the weight and improving long term durability.
- ✦ Advance dynamic design of single body with diffuser provides streamline flow and assures lower head loss.
- ✦ One of the lowest head loss check valve, resulting in savings towards power costs, valve disc with shorter plunger and spring reverse faster than most of check valve.
- ✦ All iron parts are coated inside & outside with fusion bonded epoxy for corrosion resistance per AWWA C550.
- ✦ Bronze bushing reduce wear and tear.
- ✦ Hydrodynamic design with spring ensures non slamming and prevents water hammer.
- ✦ Stainless steel spring hidden in the diffuser and protected while valve is in operation.
- ✦ Disc will positively close before reverse flow, and maximize the closing speed up to 0.2 sec.
- ✦ Installation can be vertical / horizontal / inclined.
- ✦ F/F comply with EN 558-1 Series 14.
- ✦ Valves are certified NSF61 for Drinking Water and NSF72 for Lead Content.

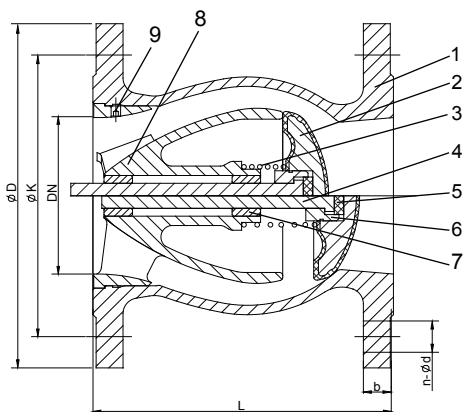
### Typical Applications:

Clean Water, Pre-cleaned Sewage Water, Fire Fighting, Irrigation, District Cooling and HVAC System

### Technical Data:

Size Range:	2" – 24"
Pressure Rating:	200 / 400 psi
Working Temperature:	-10°C - 80°C
End Connection:	ANSI B16.1 Class 125 / 250 ANSI B16.5 Class 150
Face-to-Face:	AWWA C508
Test & Inspection:	AWWA C508 / API 598

## Non-Slam Check Valves (2" - 14")



### Parts List & Materials

No.	Parts Name	Materials	Standard
1	Body	Ductile Iron	ASTM A536
2	Disc	Ductile Iron + Rubber	ASTM A536 + EPDM / NBR
3	Spring	Stainless Steel	SS304 / 316
4	Stem	Stainless Steel	SS420 / 304 / 316
5	Washer	Plastic / Rubber	Nylon / EPDM
6	Nut	Stainless Steel	SS420 / 304
7	Bushing	Bronze	C61900
8	Diffuser	Ductile Iron	ASTM A536
9	Set Screw	Stainless Steel	SS304

### Main Dimensions

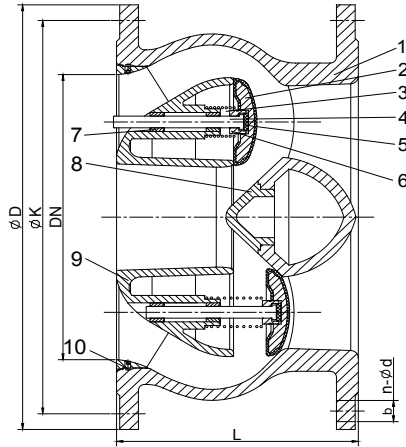
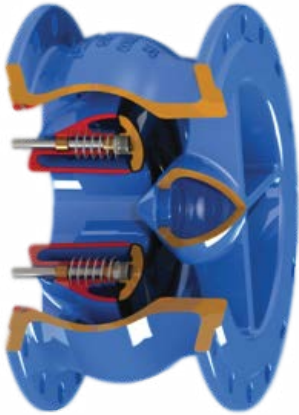
unit: inch

NPS	L	Flange Class 125				Flange Class 250			
		$\phi D$	$\phi K$	b	N- $\phi d$	$\phi D$	$\phi K$	b	N- $\phi d$
2"	5 <sup>7</sup> / <sub>8</sub>	6	4 <sup>3</sup> / <sub>4</sub>	<sup>5</sup> / <sub>8</sub>	4 - <sup>3</sup> / <sub>4</sub>	6 <sup>1</sup> / <sub>2</sub>	5	<sup>7</sup> / <sub>8</sub>	8 - <sup>3</sup> / <sub>4</sub>
2 <sup>1</sup> / <sub>2</sub> "	6 <sup>3</sup> / <sub>4</sub>	7	5 <sup>1</sup> / <sub>2</sub>	<sup>3</sup> / <sub>4</sub>	4 - <sup>3</sup> / <sub>4</sub>	7 <sup>1</sup> / <sub>2</sub>	5 <sup>5</sup> / <sub>8</sub>	1	8 - <sup>7</sup> / <sub>8</sub>
3"	7 <sup>7</sup> / <sub>8</sub>	7 <sup>1</sup> / <sub>2</sub>	6	<sup>3</sup> / <sub>4</sub>	4 - <sup>3</sup> / <sub>4</sub>	8 <sup>1</sup> / <sub>4</sub>	6 <sup>5</sup> / <sub>8</sub>	1 <sup>1</sup> / <sub>8</sub>	8 - <sup>7</sup> / <sub>8</sub>
4"	7 <sup>1</sup> / <sub>2</sub>	9	7 <sup>1</sup> / <sub>2</sub>	1	8 - <sup>3</sup> / <sub>4</sub>	10	7 <sup>7</sup> / <sub>8</sub>	1 <sup>1</sup> / <sub>4</sub>	8 - <sup>7</sup> / <sub>8</sub>
5"	7 <sup>7</sup> / <sub>8</sub>	10	8 <sup>1</sup> / <sub>2</sub>	1	8 - <sup>7</sup> / <sub>8</sub>	11	9 <sup>3</sup> / <sub>4</sub>	1 <sup>3</sup> / <sub>8</sub>	8 - <sup>7</sup> / <sub>8</sub>
6"	8 <sup>3</sup> / <sub>4</sub>	11	9 <sup>1</sup> / <sub>2</sub>	1	8 - <sup>7</sup> / <sub>8</sub>	12 <sup>1</sup> / <sub>2</sub>	10 <sup>5</sup> / <sub>8</sub>	1 <sup>1</sup> / <sub>8</sub>	12 - <sup>7</sup> / <sub>8</sub>
8"	9	13 <sup>1</sup> / <sub>2</sub>	11 <sup>3</sup> / <sub>4</sub>	1 <sup>1</sup> / <sub>8</sub>	8 - <sup>7</sup> / <sub>8</sub>	15	13	1 <sup>3</sup> / <sub>8</sub>	12 - 1
10"	9 <sup>5</sup> / <sub>8</sub>	16	14 <sup>1</sup> / <sub>4</sub>	1 <sup>1</sup> / <sub>8</sub>	12 - 1	17 <sup>1</sup> / <sub>2</sub>	15 <sup>1</sup> / <sub>4</sub>	1 <sup>7</sup> / <sub>8</sub>	16 - 1 <sup>1</sup> / <sub>8</sub>
12"	10 <sup>3</sup> / <sub>8</sub>	19	17	1 <sup>1</sup> / <sub>4</sub>	12 - 1	20 <sup>1</sup> / <sub>2</sub>	17 <sup>3</sup> / <sub>4</sub>	2	16 - 1 <sup>1</sup> / <sub>4</sub>
14"	11 <sup>3</sup> / <sub>8</sub>	21	18 <sup>3</sup> / <sub>4</sub>	1 <sup>3</sup> / <sub>8</sub>	12 - 1 <sup>1</sup> / <sub>8</sub>	23	20 <sup>1</sup> / <sub>4</sub>	2 <sup>1</sup> / <sub>8</sub>	20 - 1 <sup>1</sup> / <sub>4</sub>

unit: mm

DN	L	Flange Class 125				Flange Class 250			
		$\phi D$	$\phi K$	b	N- $\phi d$	$\phi D$	$\phi K$	b	N- $\phi d$
50	150	152	121	15.7	4 - 19	165	127.0	22.2	8 - 19
65	170	178	140	17.5	4 - 19	191	149.4	25.4	8 - 22
80	180	191	152	19.1	4 - 19	210	168.4	28.7	8 - 22
100	190	229	191	23.9	8 - 19	254	200.2	31.8	8 - 22
125	200	254	216	23.9	8 - 22	279	247.7	35.1	8 - 22
150	210	279	241	25.4	8 - 22	318	270.0	36.6	12 - 22
200	230	343	298	28.4	8 - 22	381	330.2	41.4	12 - 25
250	250	406	362	30.2	12 - 25	445	387.4	47.8	16 - 28
300	262	483	432	31.8	12 - 25	521	450.9	50.8	16 - 32
350	290	533	476	35.1	12 - 28	584	514.4	54.1	20 - 32

## Non-Slam Check Valves (16"-24")



### Parts List & Materials

No.	Parts Name	Materials	Standard
1	Body	Ductile Iron	ASTM A536
2	Disc	Ductile Iron + Rubber	ASTM A536 + EPDM
3	Spring	Stainless Steel	SS304 / 316
4	Stem	Stainless Steel	SS304
5	Washer	Plastic	Nylon
6	Nut	Stainless Steel	SS420 / 304
7	Bushing	Bronze	C61900
8	Plug	Ductile Iron	ASTM A536
9	Diffuser	Ductile Iron	ASTM A536
10	Set Screw	Stainless Steel	SS304

### Main Dimensions

unit: inch

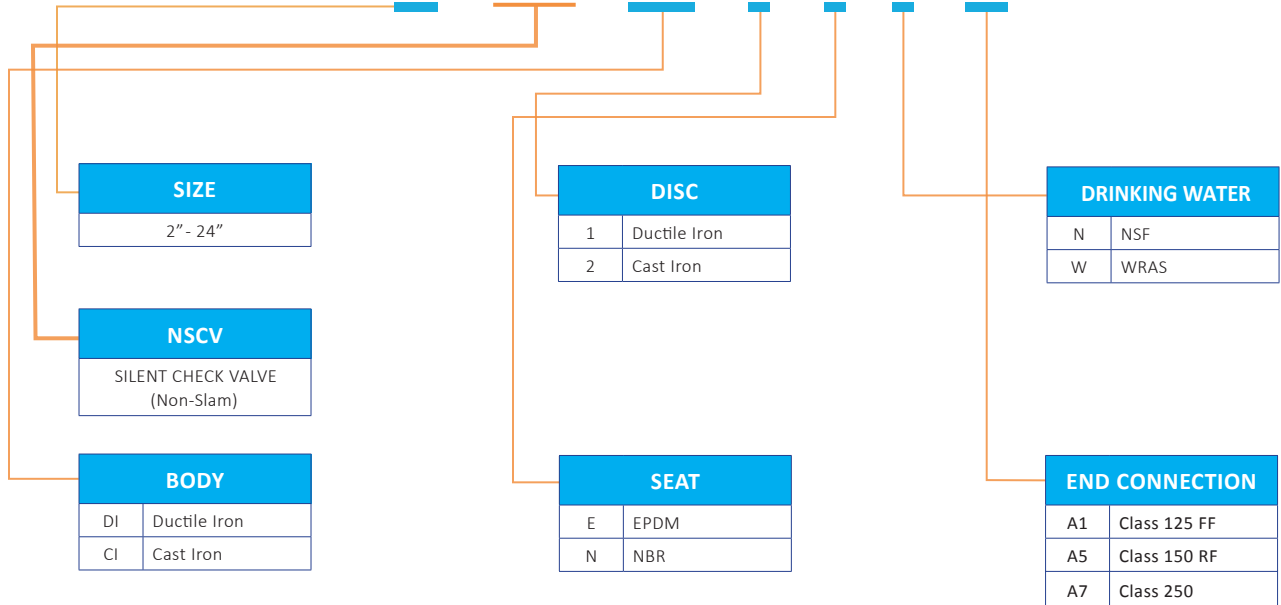
NPS	L	Flange Class 125				Flange Class 250			
		ØD	ØK	b	N-Ød	ØD	ØK	b	N-Ød
16"	12 ¼	23 ½	21 ¼	1 ½	16 - 1 ⅝	25 ½	22 ½	2 ¼	20 - 1 ⅝
18"	13	25	22 ¾	1 ½	16 - 1 ¼	28	24 ¾	2 ⅝	24 - 1 ⅝
20"	13 ¾	27 ½	25	1 ¾	20 - 1 ¼	30 ½	27	2 ½	24 - 1 ⅝
24"	15 ⅞	32	29 ½	1 ⅞	20 - 1 ⅝	36	32	2 ¾	24 - 1 ⅝

unit: mm

DN	L	Flange Class 125				Flange Class 250			
		ØD	ØK	b	N-Ød	ØD	ØK	b	N-Ød
400	310	597	540	36.6	16 - 28	648	571.5	57.2	20 - 35
450	330	635	578	39.6	16 - 28	711	628.7	60.5	24 - 35
500	350	699	635	42.9	20 - 28	775	685.8	63.5	24 - 35
600	390	813	749	47.8	20 - 35	914	812.8	69.9	24 - 41

## PRODUCT SELECTION

**VT - XX - NSCV - XXX - X - X - X - XX**



**VAHN-TECH International Inc.**  
 10-755 Queensway East, Mississauga, Ontario L4Y 4C5, Canada  
 Tel.: +1 416 342 0001 E-mail: info@vahn-tech.com

[www.vahn-tech.com](http://www.vahn-tech.com)