

C515/C509 Resilient Seated Gate Valves - Grooved End

Resilient Seated gate valves are used as isolation valves for a broad range of applications, including reliable and safe supply of drinking water, service and firefighting water. They are suitable for both above ground and underground installation.

Design Features:

- ✦ Resilient Seated Gate Valves fully meet or exceed AWWA C509 and AWWA C515.
- ✦ High strength ductile iron body used for lowering the weight and improving long term durability.
- ✦ Ductile iron wedge is fully encapsulated in vulcanized EPDM / NBR rubber leaving no exposed metal surface. Central guides help reduce friction between wedge and body during open / close operations.
- ✦ All iron parts are coated inside & outside with fusion bonded epoxy for corrosion resistance per AWWA C550.
- ✦ Stem seal design provides effective sealing against dirt and other impurities.
- ✦ The waterway is smooth, well rounded, and provides superior flow characteristics and venturi effect.
- ✦ Grooved end connection compliant with AWWA C606.
- ✦ NSF61 certified valve available as option.



Typical Applications:

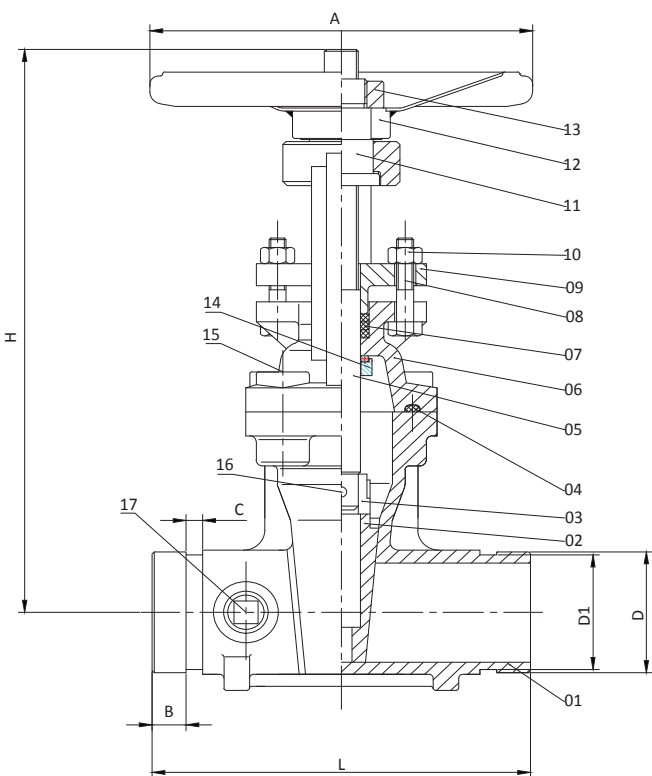
General Water Supply, Fire Fighting, HVAC, District Cooling & Sewage System

Technical Data:

Design Standard:	AWWA C509 / C515
Size Range:	2" – 12"
Pressure Rating:	200 psi / 300 psi
Working Temperature:	10°C – 80°C
End Connection:	AWWA C606
Test & Inspection:	AWWA C509 / C515

Resilient Seat Gate Valves (OS&Y, Grooved End) 2" - 12"

Parts List & Materials



No.	Parts Name	Materials	Standards
1	Body	Ductile Iron	ASTM A536 65-45-12
2	Disc	Ductile Iron + EPDM	ASTM A536 65-45-12 + EPDM
3	Connecting Part	Al-Bronze	ASTM B148 C95400
4	Sealing Pad	EPDM	ASTM D2000 EPDM
5	Stem	Stainless Steel	ASTM A276 SS304
6	Cap	Ductile Iron	ASTM A536 65-45-12
7	Sealing Kits	PTFE	ASTM D4745
8	Bolt	Steel	ASTM A307 B
9	Platen	Ductile Iron	ASTM A536 65-45-12
10	Nut	Steel	ASTM A29
11	Rotating Nut	Ductile Iron	ASTM A536 65-45-12
12	Handwheel	Ductile Iron	ASTM A536 65-45-12
13	Lock Nut	Steel	ANSI 1045
14	Flat Key	Stainless Steel	ASTM A276 SS416
15	Countersunk Head Bolt	Steel	ASTM A29
16	Cylinder Pin	Steel	ASTM A29
17	Plug	Cast Bronze	ASTM B148

Main Dimensions

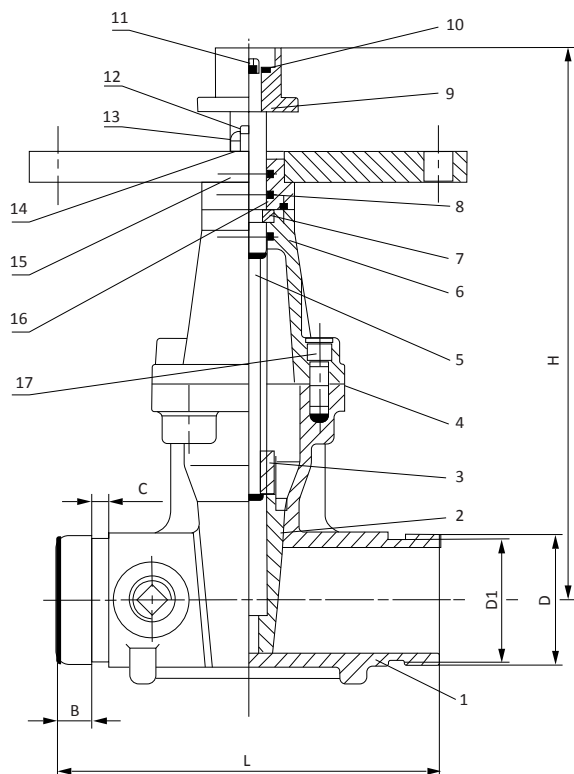
NPS	DN	L	H	A	D*	D1*	B	C
2"	50	178	313	180	60.3	57.2	15.9	7.9
2 1/2"	65	190	340	200	76.1	72.3	15.9	7.9
3"	80	203	387	220	88.9	84.9	15.9	7.9
4"	100	229	440	250	114.3	110.1	15.9	9.5
5"	125	254	546	280	141.3	137	15.9	9.5
6"	150	267	607	300	168.3	163.9	15.9	9.5
8"	200	292	786	350	219.1	214.4	19	11.1
10"	250	330	946	406	273	268.3	19	12.7
12"	300	356	1110	406	323.9	318.3	19	12.7

unit: mm

*Other diameters available as options, contact us for more details.

Resilient Seat Gate Valves (NRS, Grooved End) 2" - 12"

Parts List & Materials



No.	Parts Name	Materials	Standards
1	Body	Ductile Iron	ASTM A536 65-45-12
2	Disc	Ductile Iron + EPDM	ASTM A536 65-45-12 + ASTM D2000
3	Nut	Al-Bronze	ASTM B148 C95400
4	Gasket	EPDM	ASTM D2000
5	Stem	SS304	ASTM A276
6	Cap	Ductile Iron	ASTM A536 65-45-12
7	Retainer Ring	Al-Bronze	ASTM B148 C95400
8	O-Ring	EPDM	ASTM D2000
9	Wrench Nut	Ductile Iron	ASTM A536 65-45-12
10	Minipad	Steel	ASTM A29
11	Bolt	Steel	ASTM A29
12	Stud	Steel	ASTM A29
13	Nut	Steel	ASTM A29
14	Flat Washer	Steel	ASTM A29
15	Coupling Flange	Ductile Iron	ASTM A536 65-45-12
16	Platen	Ductile Iron	ASTM A536 65-45-12
17	Countersunk Head Bolt	Carbon Steel	ASTM A29

Main Dimensions

unit: mm

NPS	DN	L	H	D*	D1*	B	C
2"	50	178	265	60.3	57.15	15.9	7.9
2 ½"	65	190	289	76.1	72.3	15.9	7.9
3"	80	203	326	88.9	84.9	15.9	7.9
4"	100	229	355	114.3	110.1	15.9	9.5
5"	125	254	410	141.3	137	15.9	9.5
6"	150	267	455	168.3	163.9	15.9	9.5
8"	200	292	558	191.1	214.4	19	11.1
10"	250	330	648	273	268.3	19	12.7
12"	300	356	745	323.9	318.3	19	12.7

*Other diameters available as options, contact us for more details.

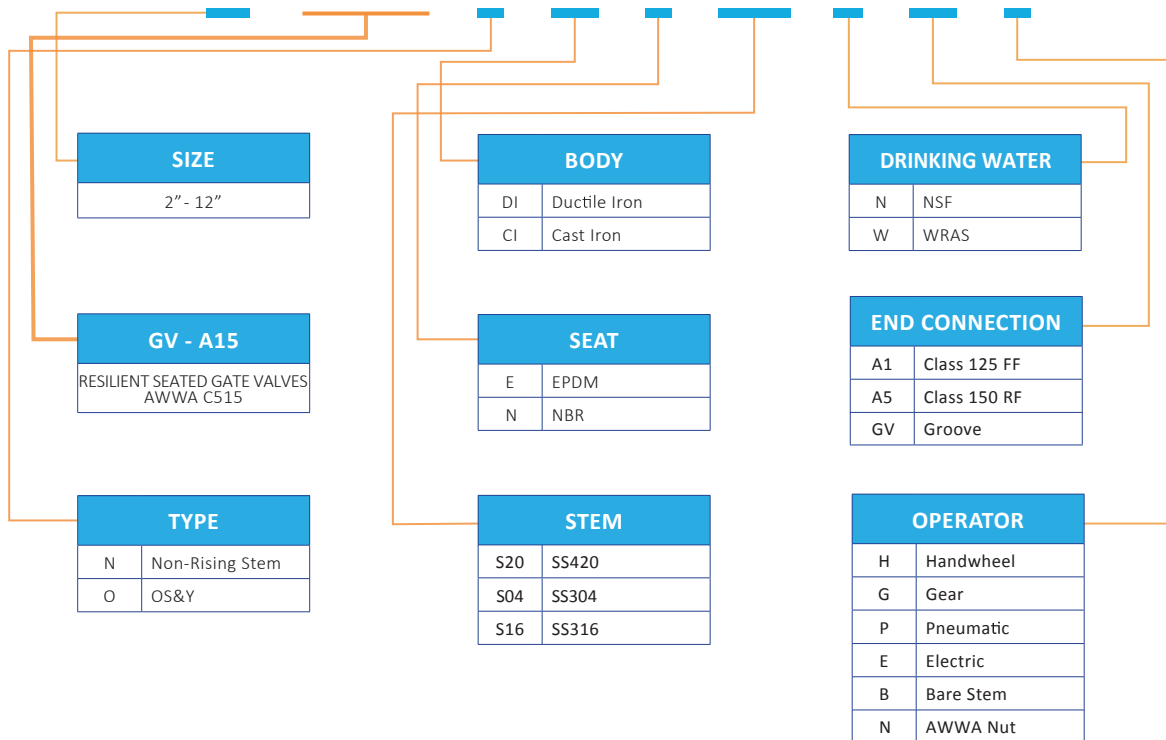
Technical Parameters (OS&Y)

NPS	DN	Torque (N.m)*	Weight (kg)	Number of turns
2"	50	59	14	13
2 1/2"	65	68	17	17
3"	80	75	20	20
4"	100	104	31	25
5"	125	122	42	25
6"	150	149	50	30
8"	200	204	88	40
10"	250	251	135	42
12"	300	305	190	50

*Not including safety factor.

PRODUCT SELECTION

VT - XX - GV-A15 - X - XX - X - XXX - X - XX - X



VAHN-TECH International Inc.

10-755 Queensway East, Mississauga, Ontario L4Y 4C5, Canada
Tel.: +1 416 342 0001 E-mail: info@vahn-tech.com

www.vahn-tech.com